



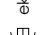

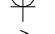

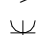
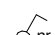
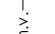




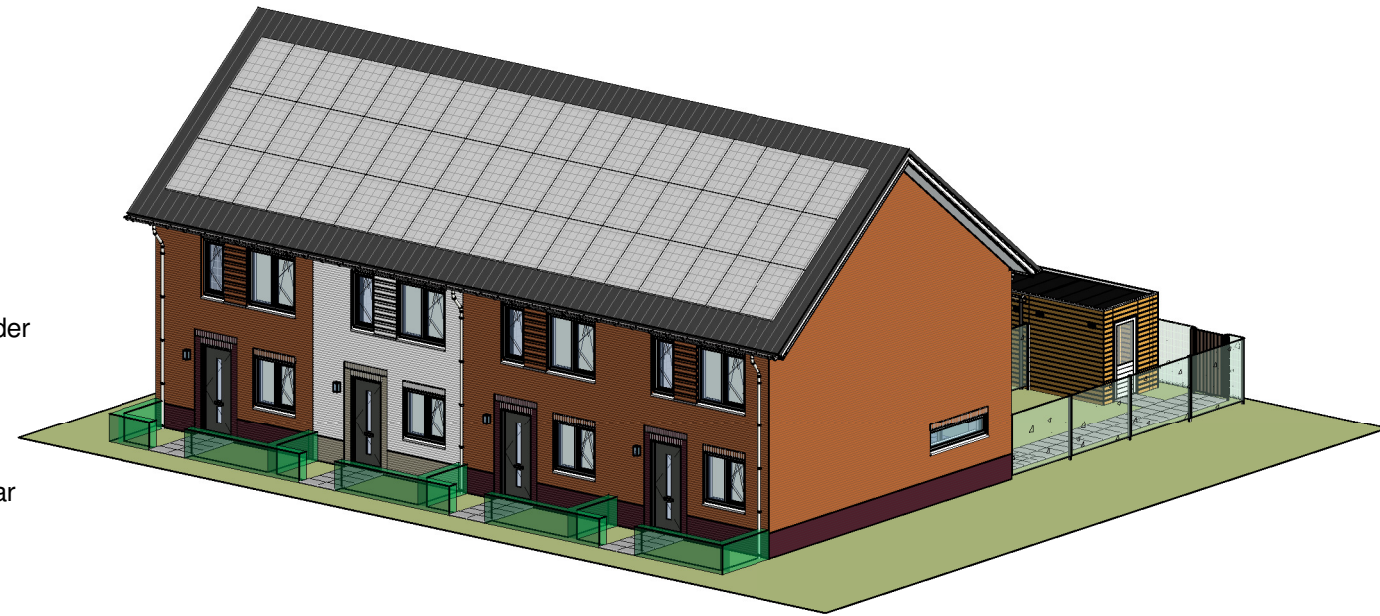
ELEKTRA SYMBOLEN

	dubbele horizontale wandcontactdoos (wcd) woonkamer & slaapkamers 300+ vloer, overige ruimten 1050+ vloer
	dubbele wandcontactdoos (wcd) woonkamer & slaapkamers 300+ vloer, overige ruimten 1050+ vloer
	enkele wcd met randaarde
	enkele wcd t.b.v. afzuigkap 2250+vloer
	enkele wcd perilex elektrisch koken
	enkele wcd t.b.v. koelkast
	enkele wcd t.b.v. radiator
	enkele wcd t.b.v. vaatwasser
	enkele wcd t.b.v. wasapparaat
	enkele wcd t.b.v. wasdroger
	combinatie enkele wcd met enkelpolige schakelaar
	aansluitpunt mechanische ventilatie bedraad
	aansluitpunt thermostaat bedraad
	aansluitpunt cai, 300+ vl., bedraad
	aansluitpunt telecommunicatie, bedraad
	aansluitpunt boiler, loze leiding naar meterkast (mk)
	aansluitpunt zonwering, loze leiding naar mk

	enkelpolige schakelaar, 1050+ vloer
	wisselschakelaar, 1050+ vloer
	mechanische ventilatie CO2 opnemer
	aansluiting plafondlichtpunt (zonder armatuur)
	aansluiting plafondlichtpunt op bewegingsmelder
	aansluiting wandlichtpunt (zonder armatuur)
	aansluiting wandlichtpunt op schemerschakelaar
	belinstallatie
	beldrukker
	optische rookmelder, aangesloten op elektriciteitsnet (NEN 2555)
	hoofdaarding en aarding badkamer
	mechanische ventilatie afzuigpunt
	mechanische ventilatie toevoerpunt
	standleiding evt. i.c.m. ontluchting
	vloerverwarming verdeler
	elektrische radiator afmetingen door installateur
	vloerverwarming
	omvormer t.b.v. zonnepanelen

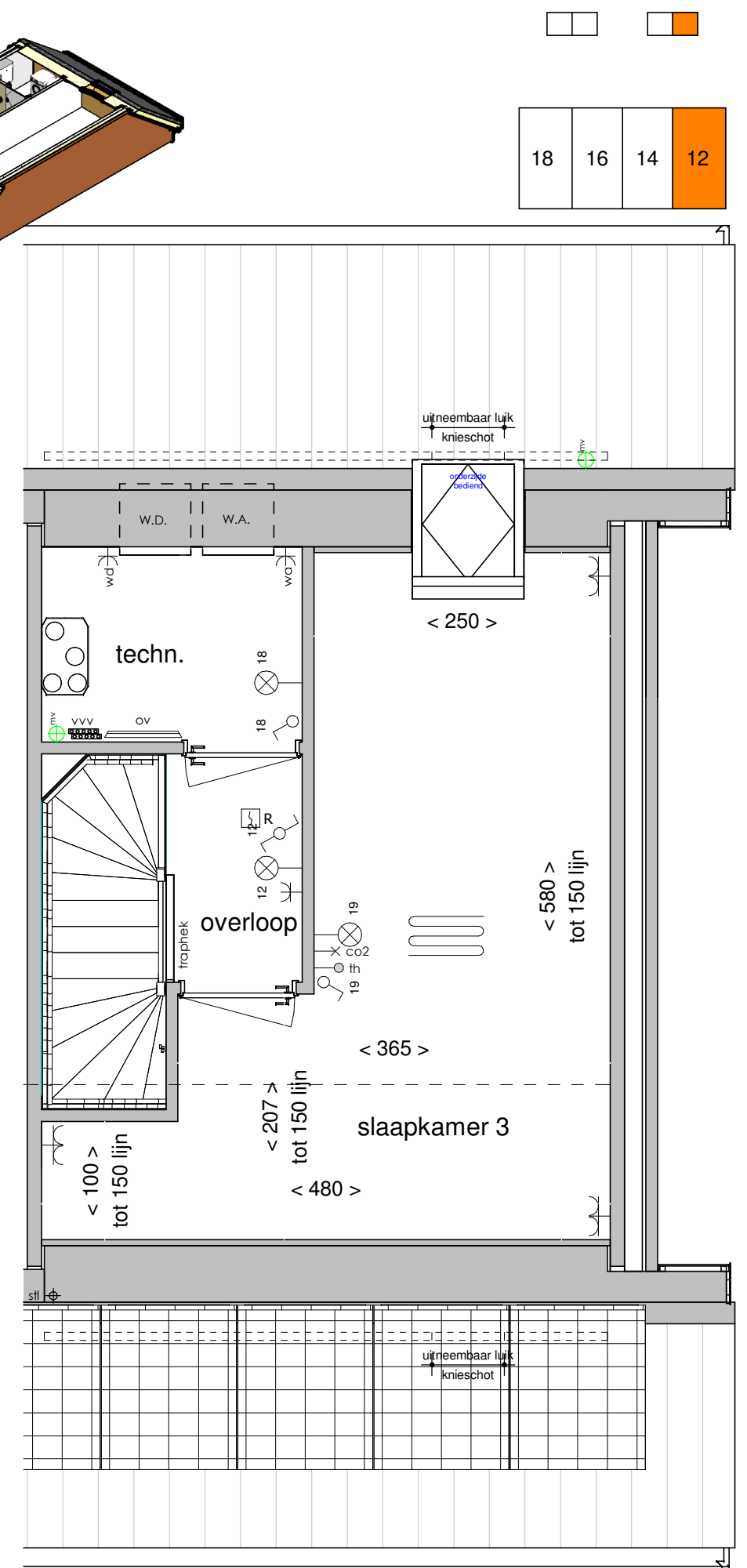
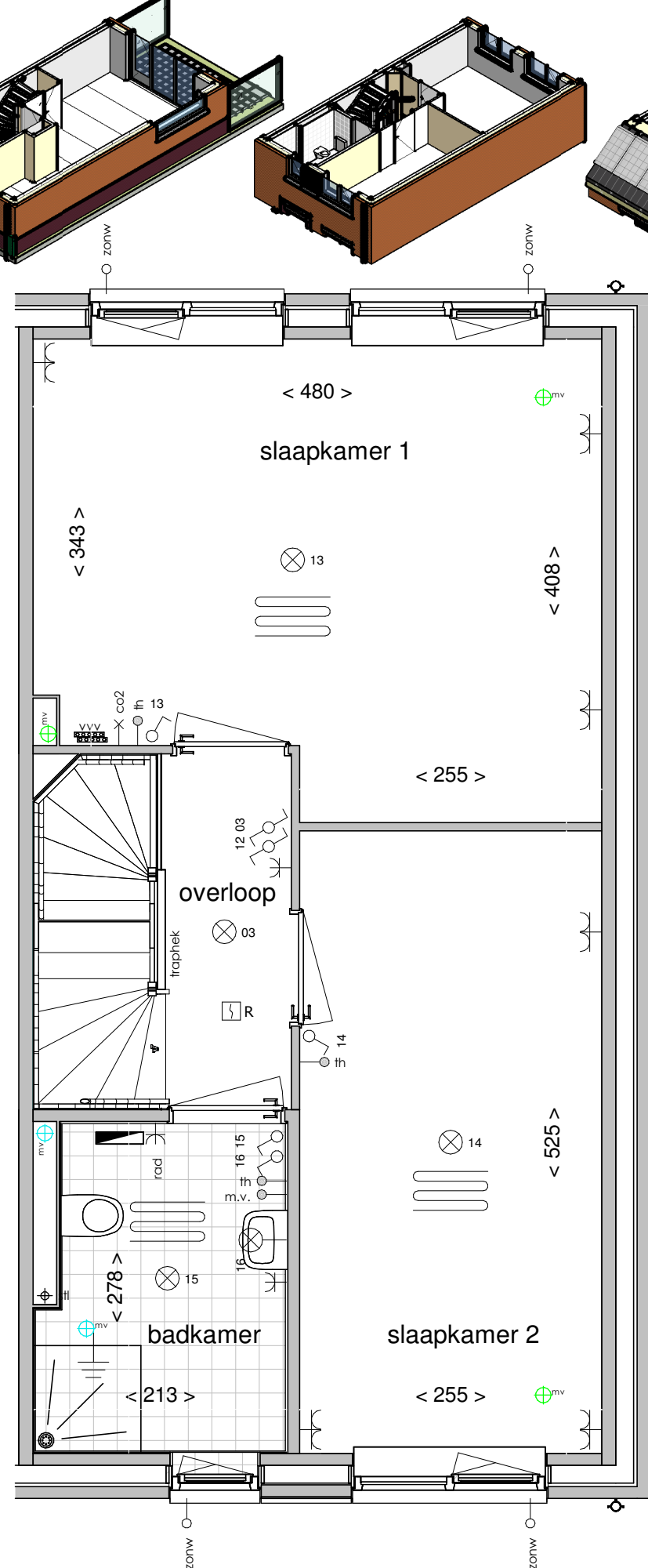
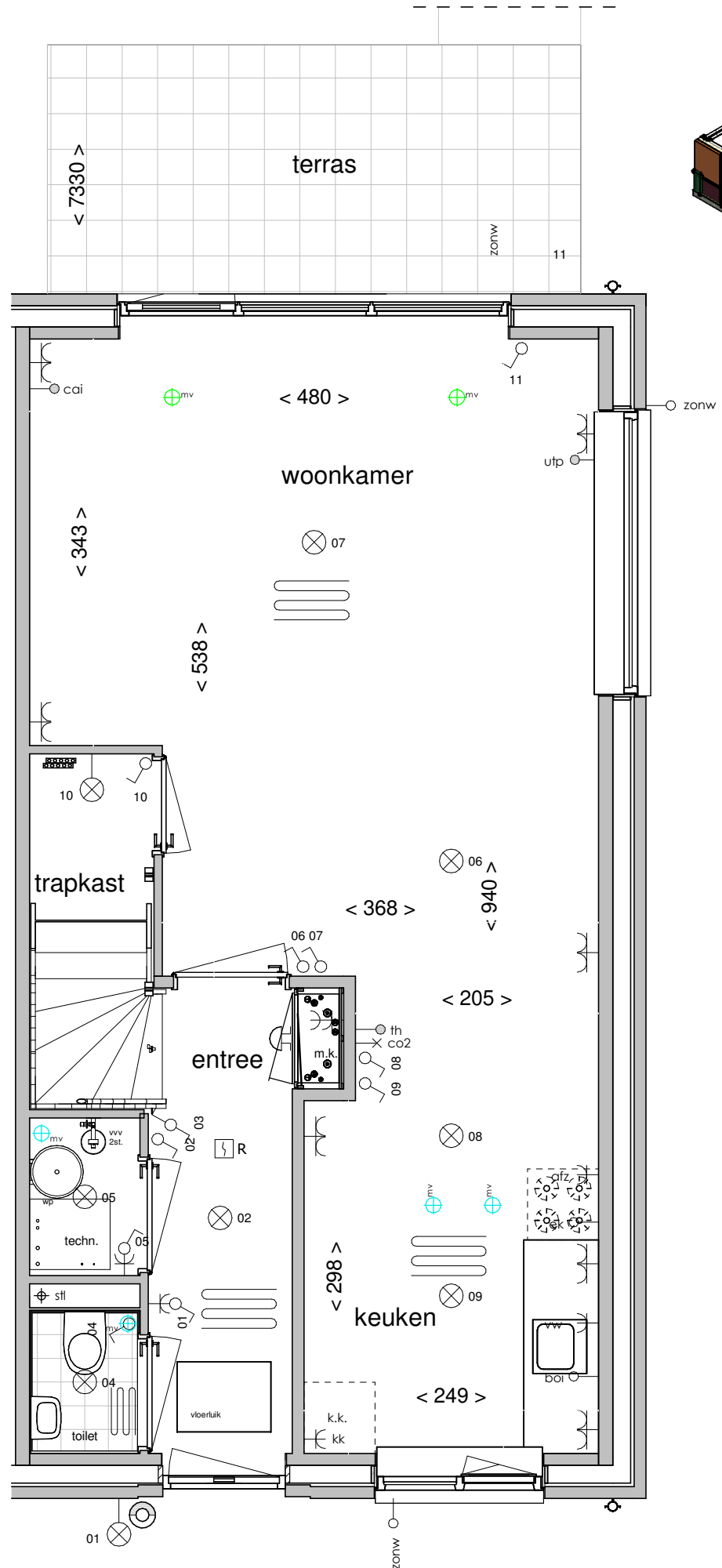
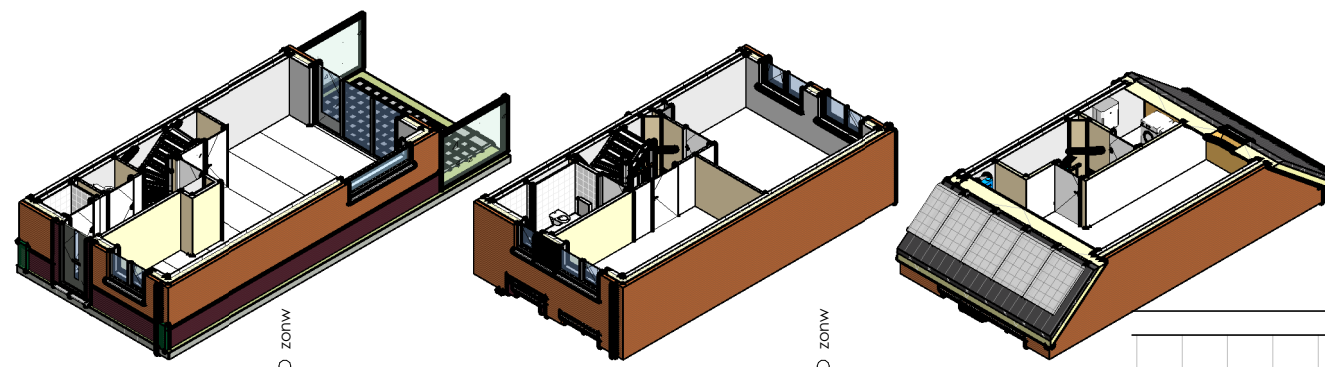
Afkortingen

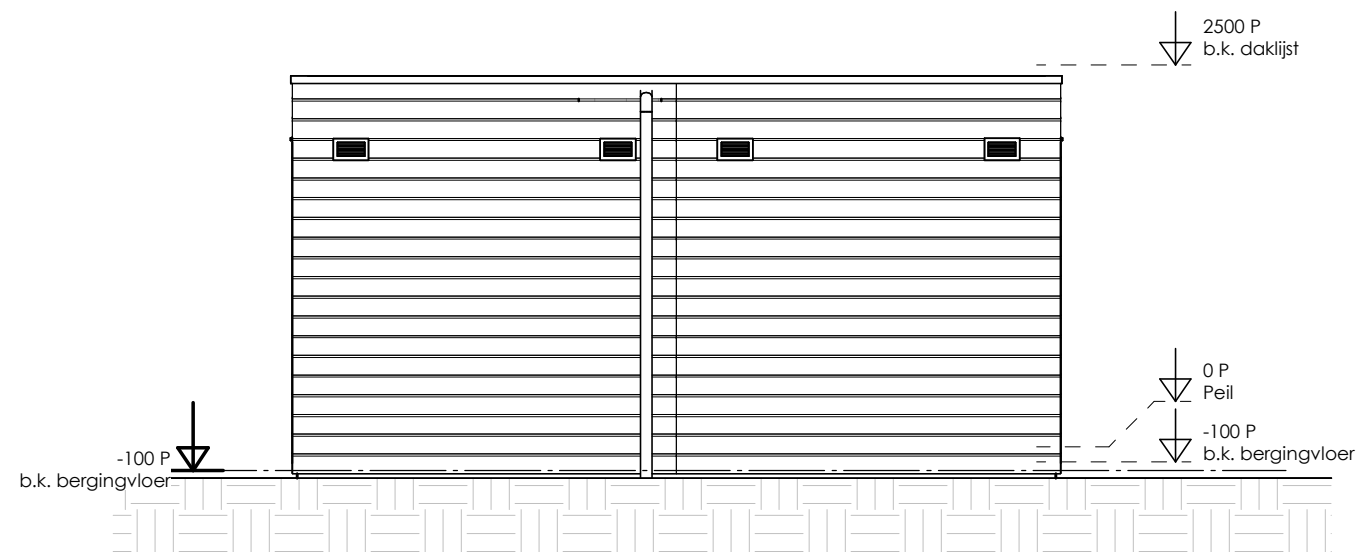
hwa	= hemelwaterafvoer
kk	= opstelplaats koelkast
mv	= mechanische ventilatie
R	= rookmelder volgens NEN 2555
stl	= standleiding riolering
vr	= ventilatierooster
vvv	= vloerverwarming verdeler
wa	= opstelplaats wasapparaat
wd	= opstelplaats wasdroger
wp	= warmtepomp





18	16	14	12
----	----	----	----

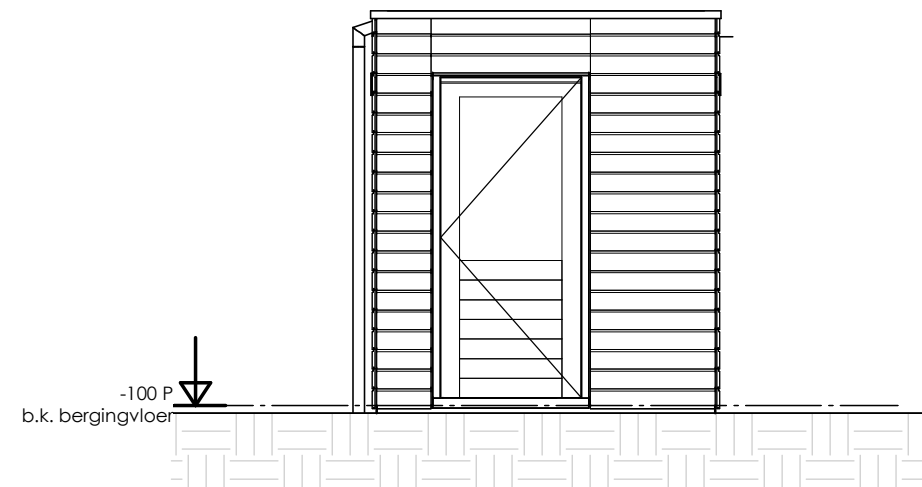




Coupurehof 14

Coupurehof 12

Vooraanzicht



Coupurehof 12

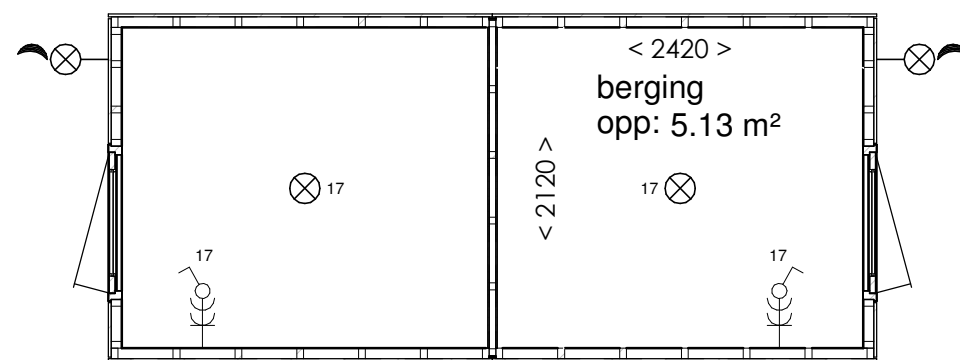
Rechterzijaanzicht



Coupurehof 12

Coupurehof 14

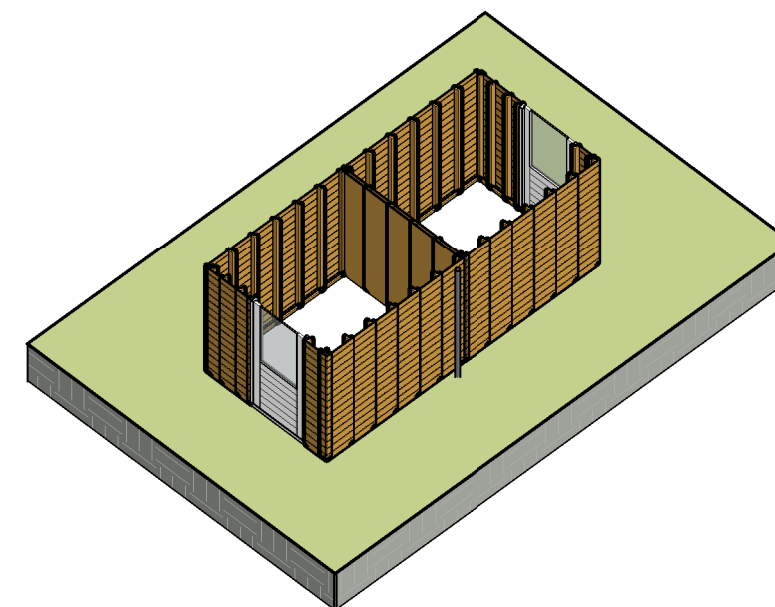
Achteraanzicht



Coupurehof 14

hwa Coupurehof 12

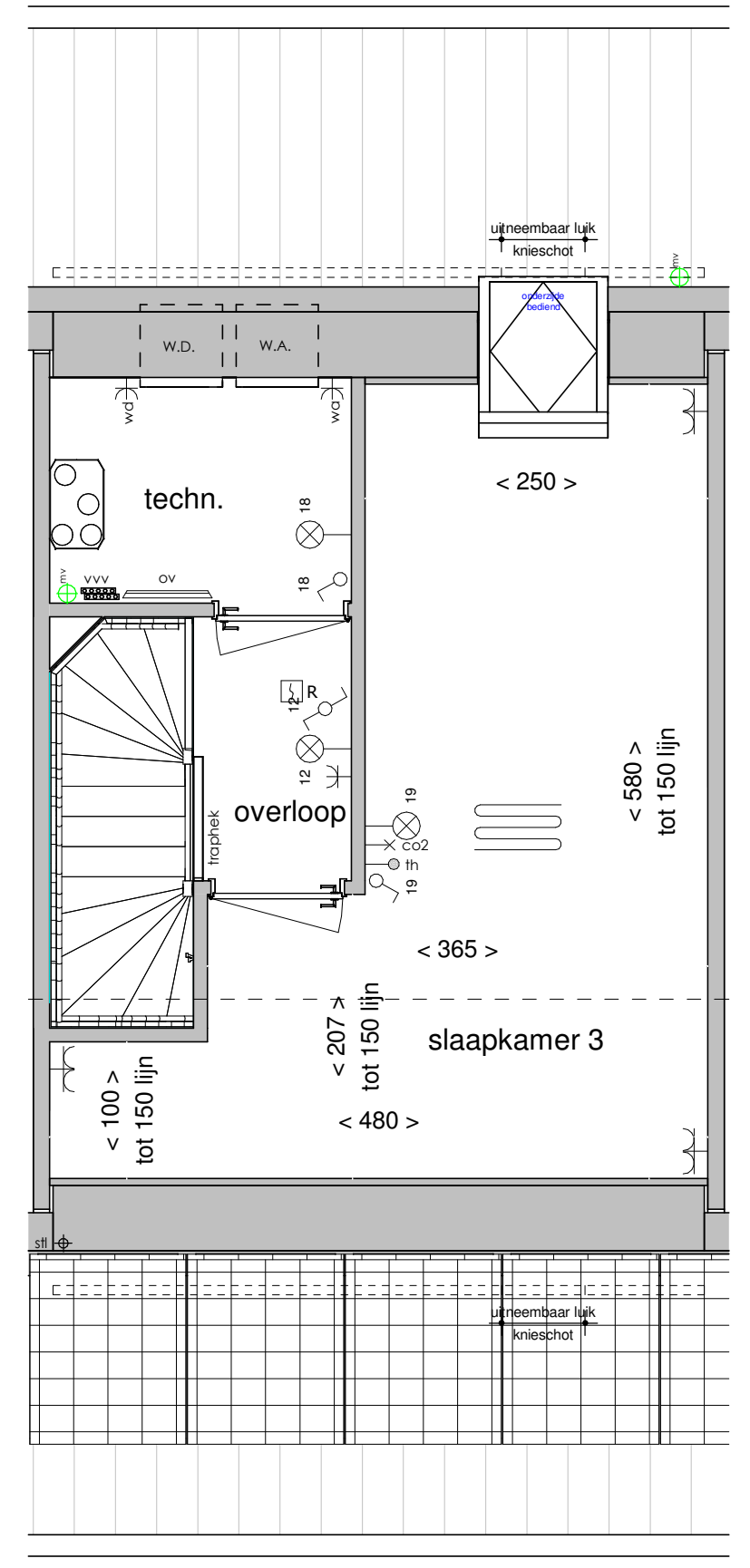
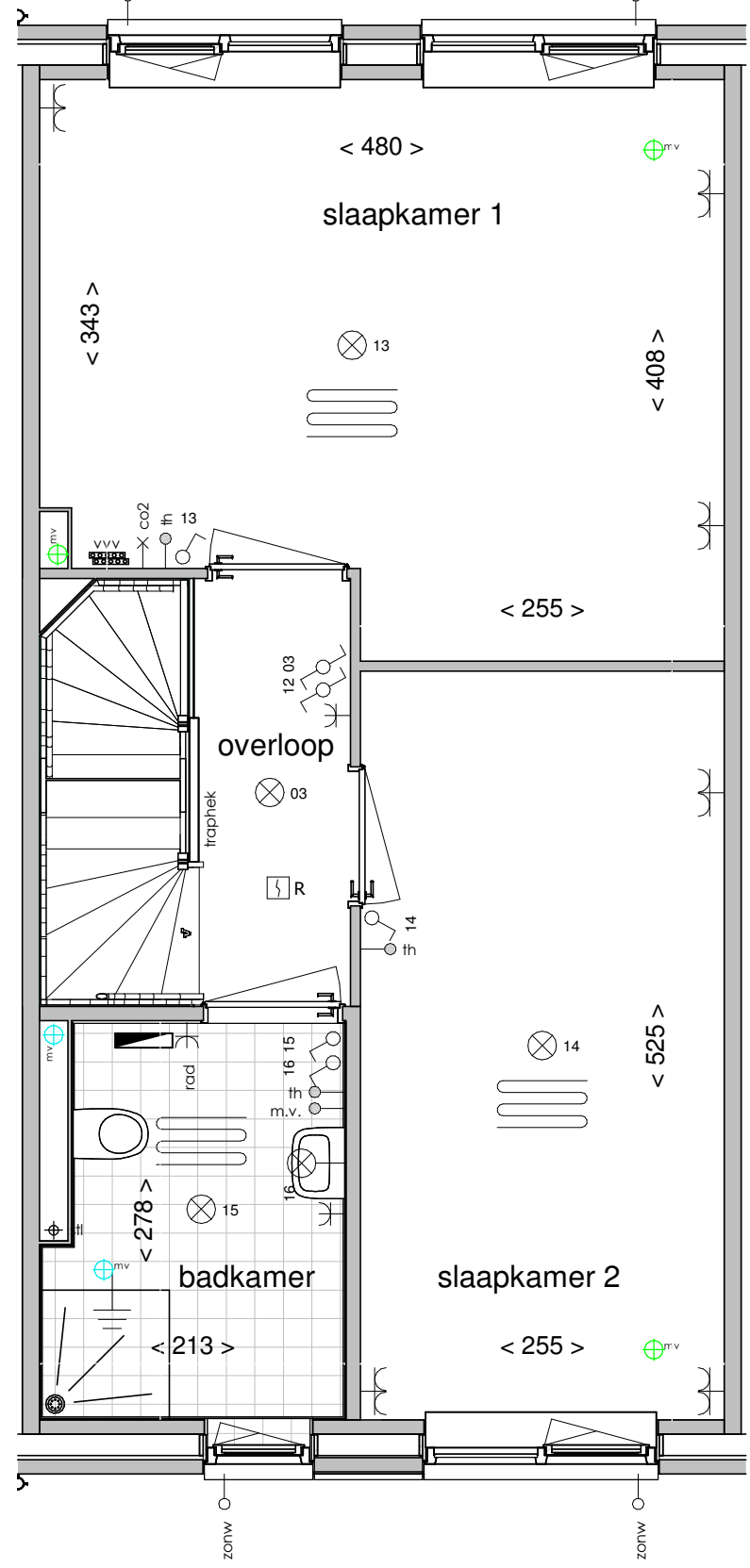
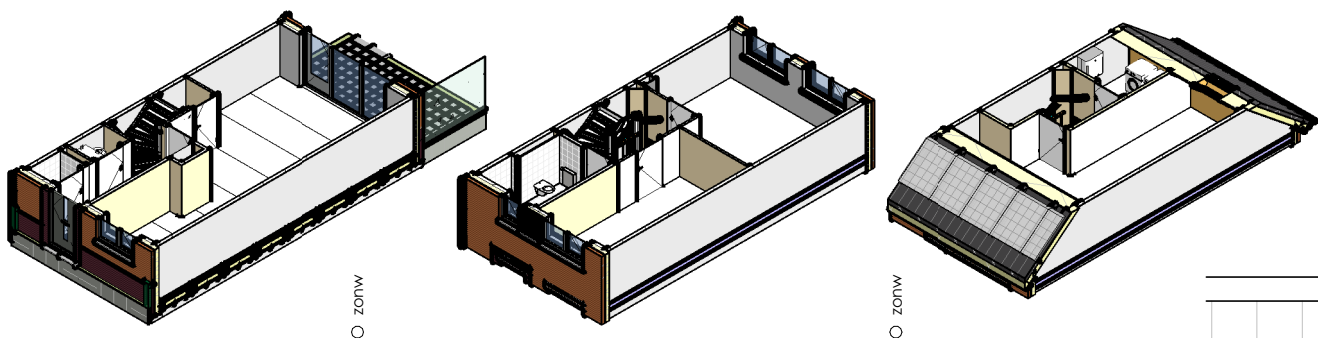
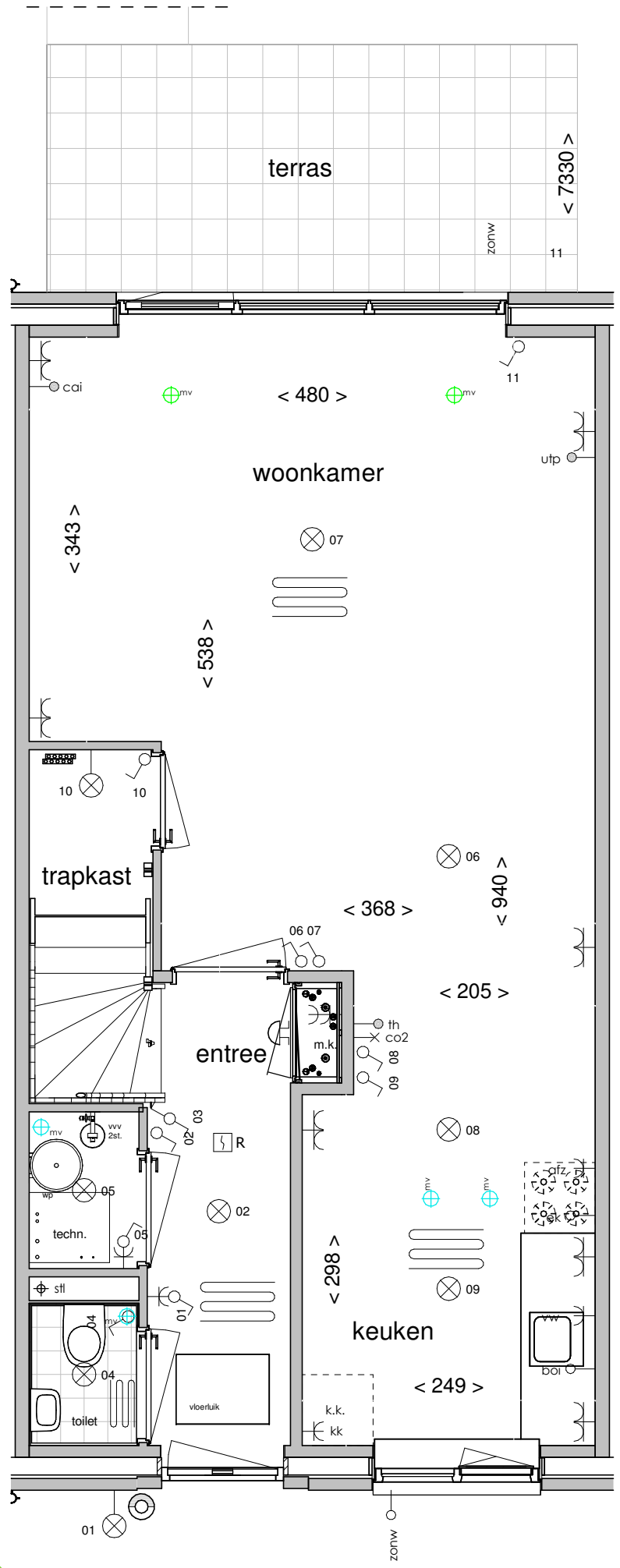
Plattegrond

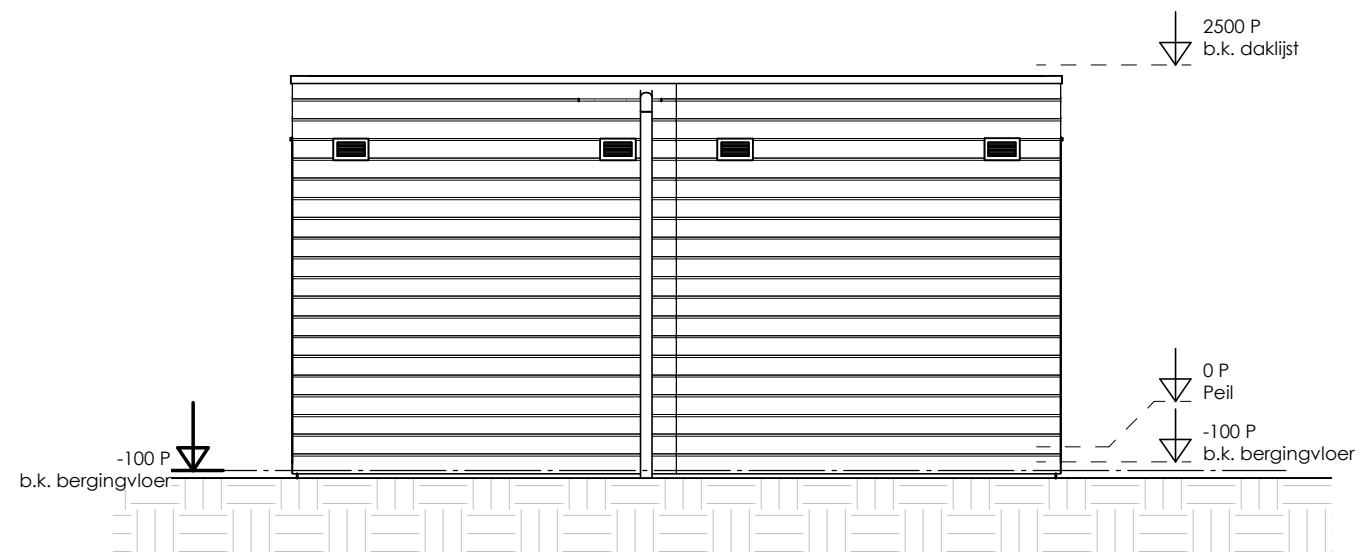


18	16	14	12
----	----	----	----

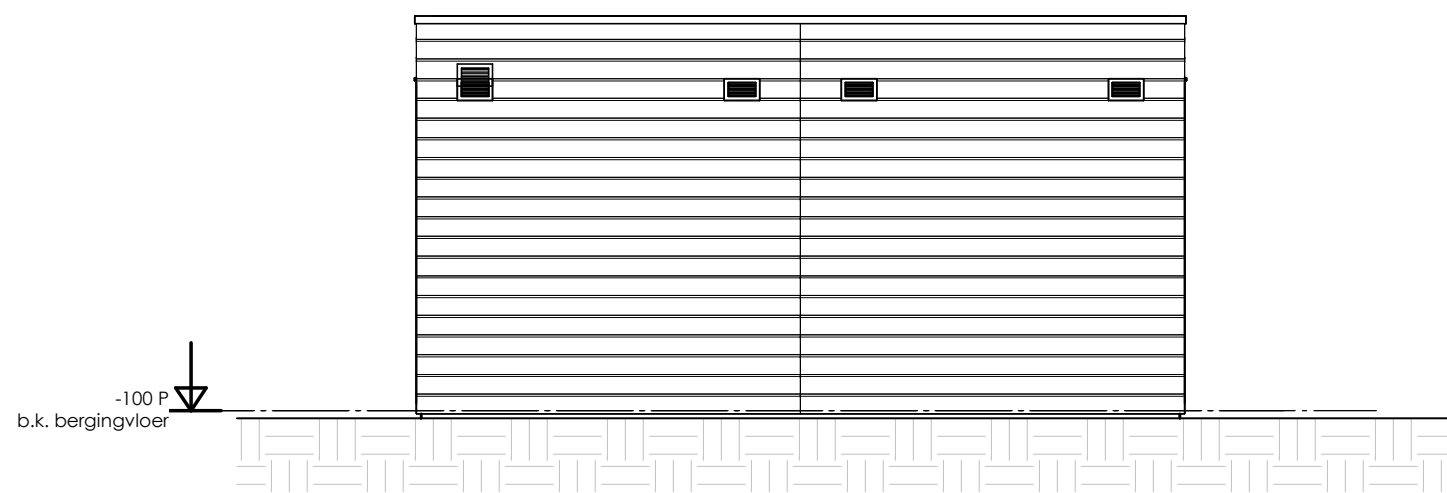


18	16	14	12
----	----	----	----

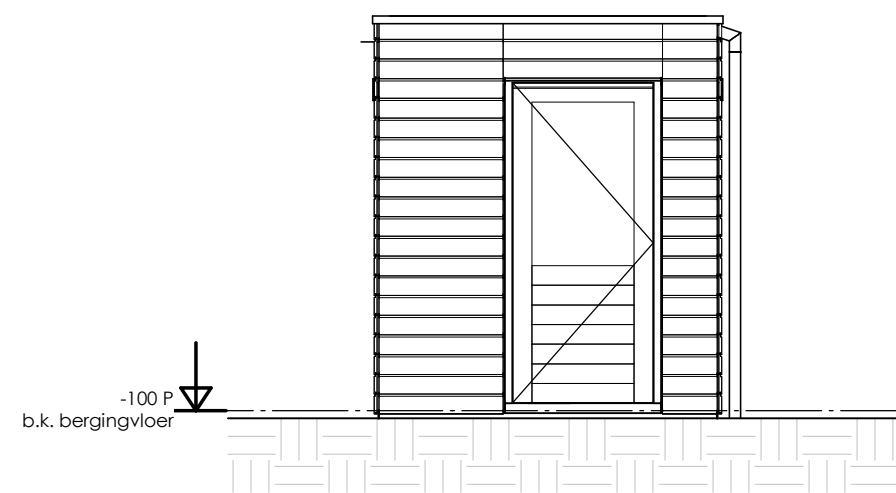




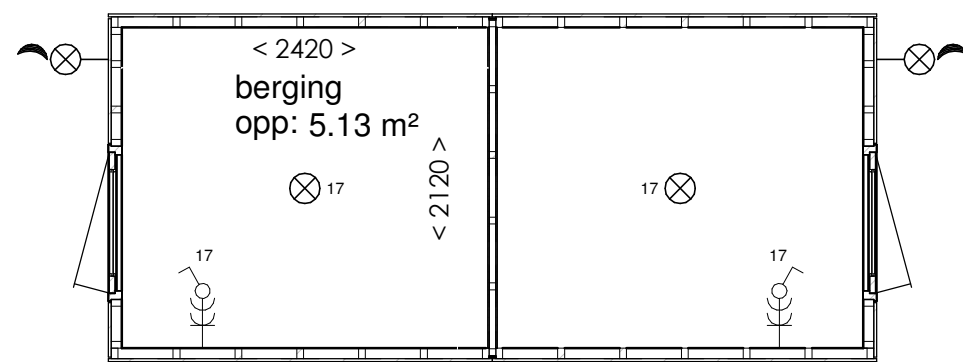
Coupurehof 14 Coupurehof 12
Vooraanzicht



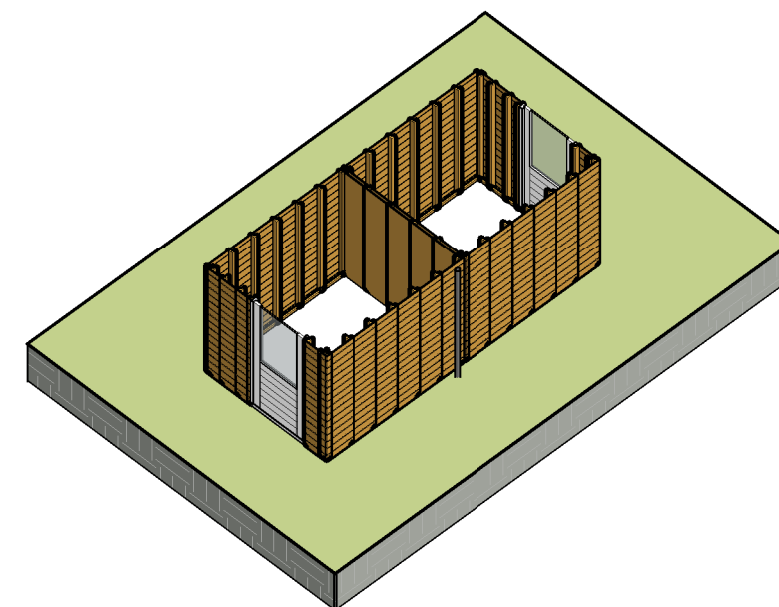
Coupurehof 12 Coupurehof 14
Achteraanzicht



Coupurehof 14
Linkerzijaanzicht



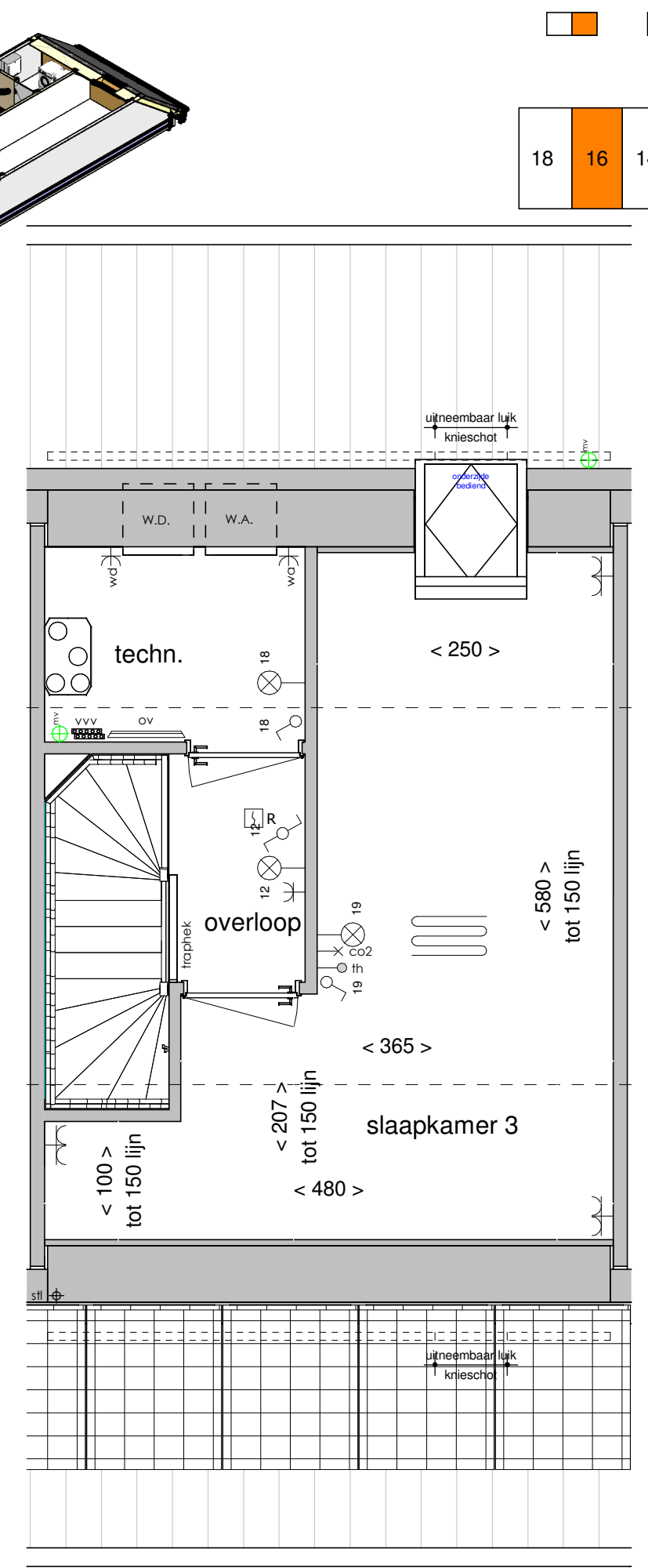
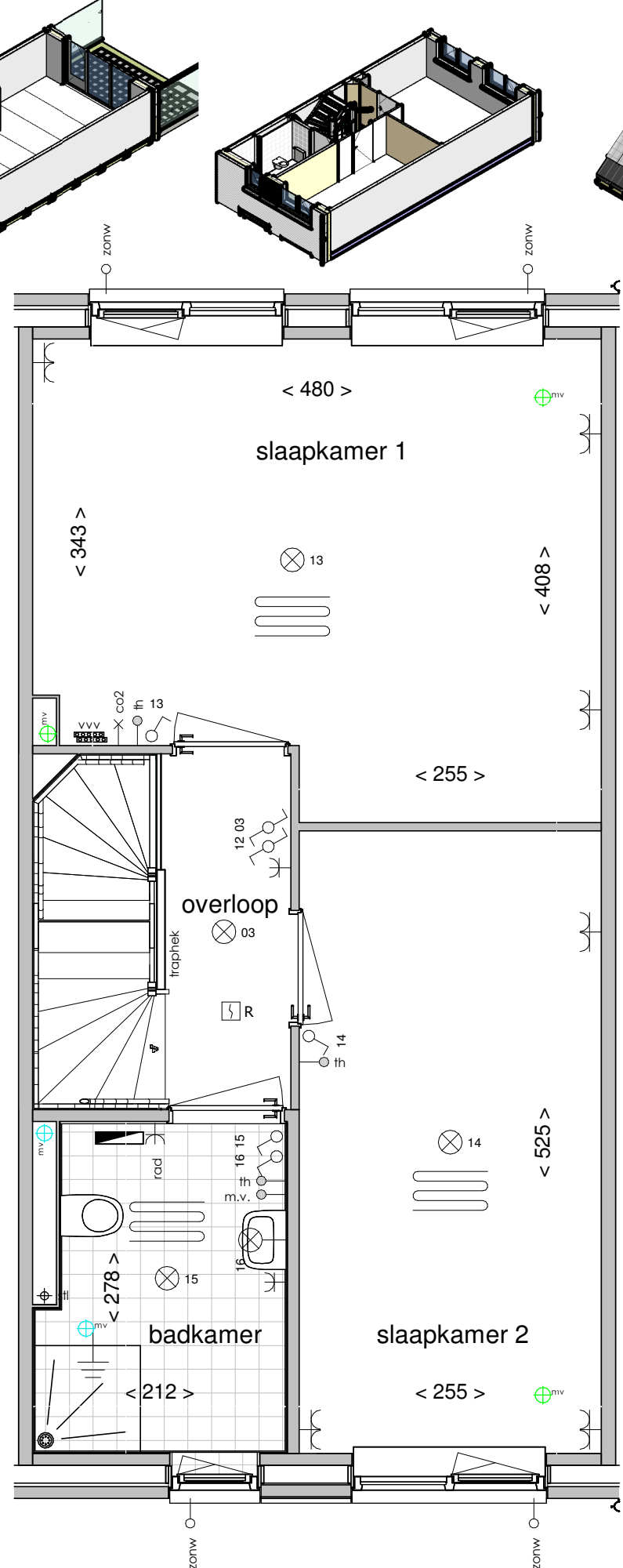
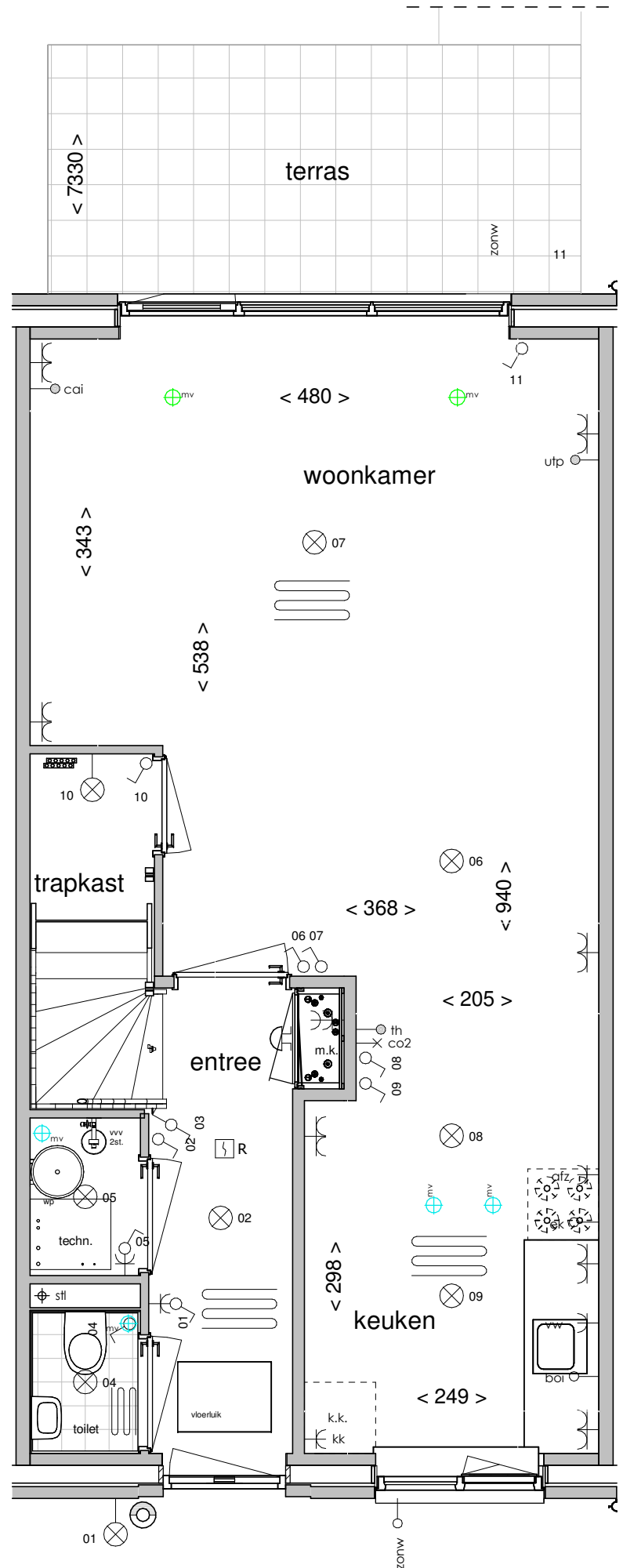
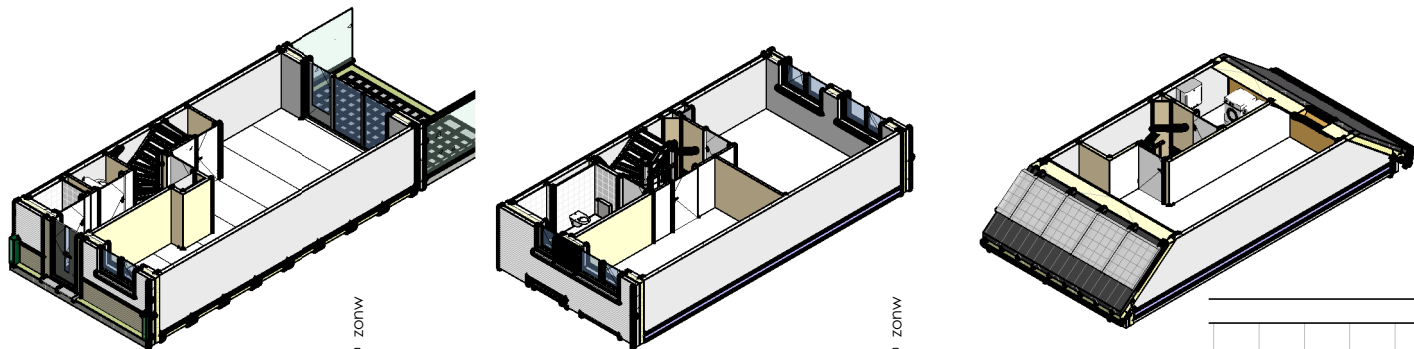
Coupurehof 14 hwa Coupurehof 12
Plattegrond

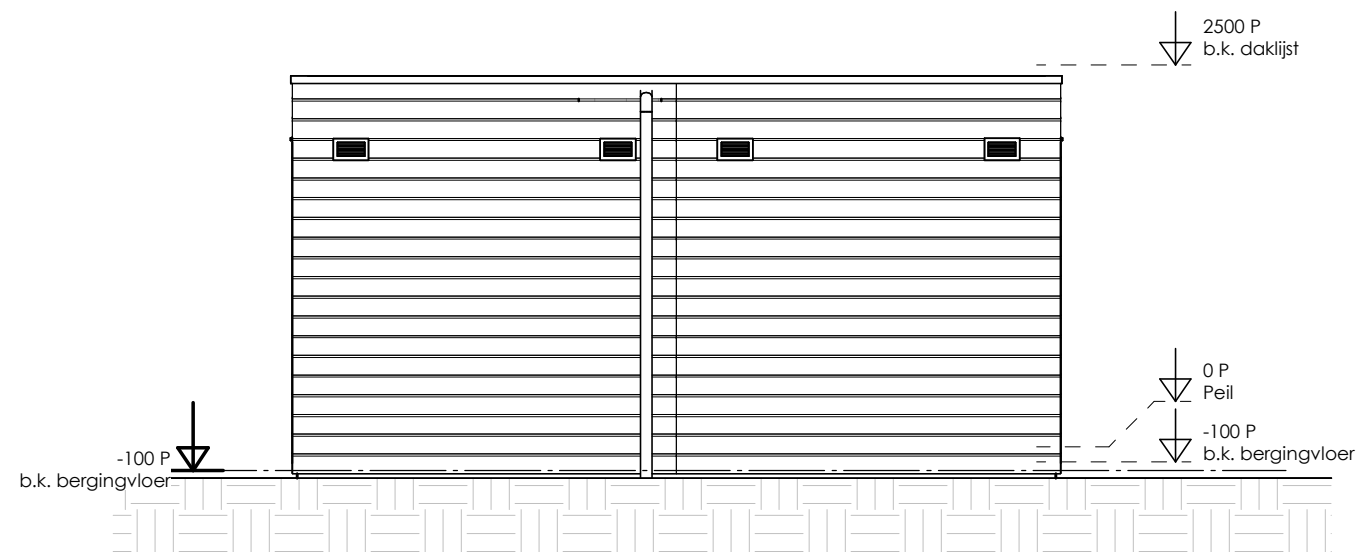


18	16	14	12
----	----	----	----

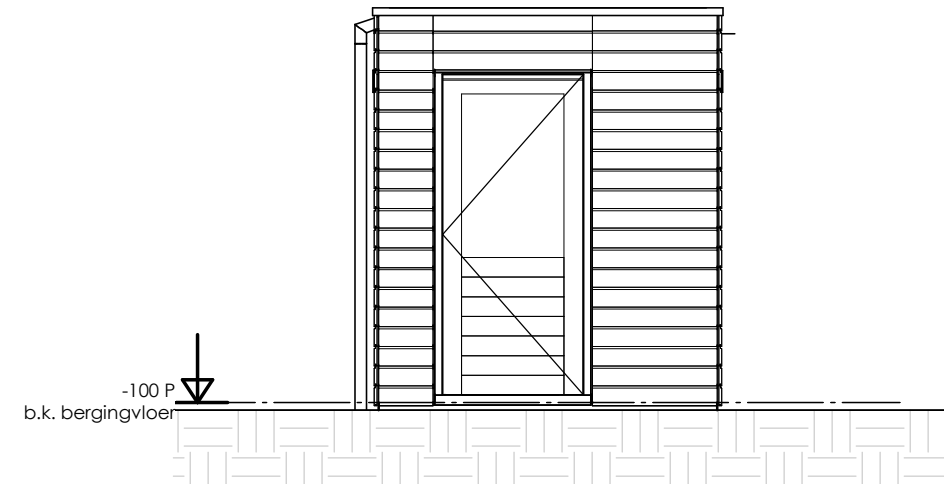


18	16	14	12
----	----	----	----

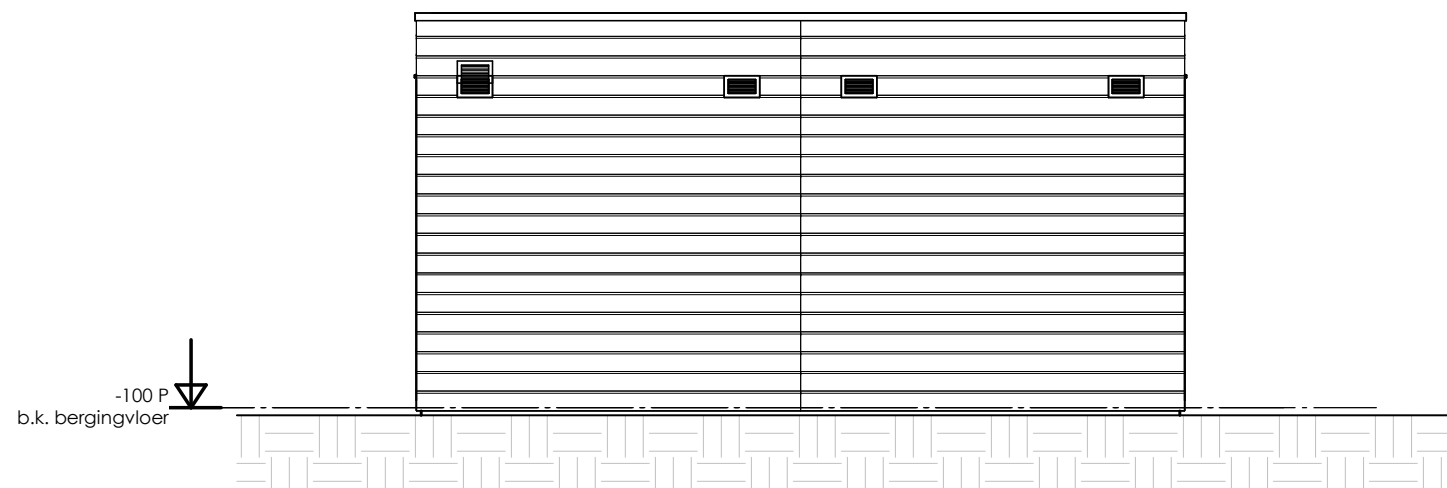




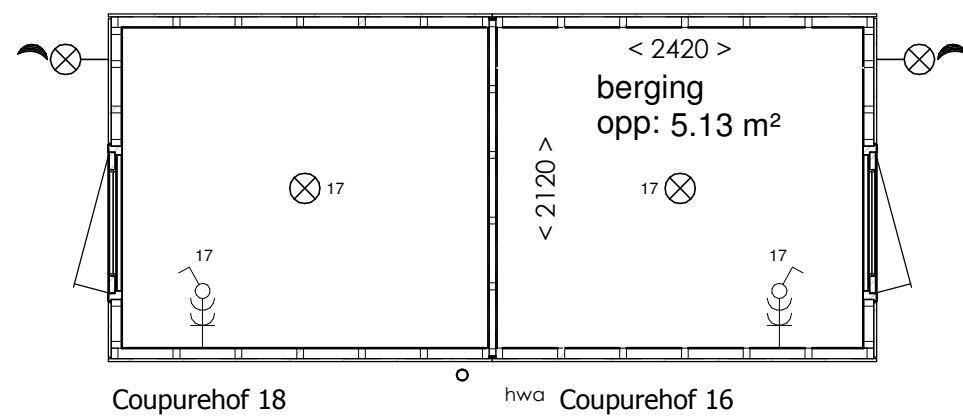
Coupurehof 18
Coupurehof 16
Vooraanzicht



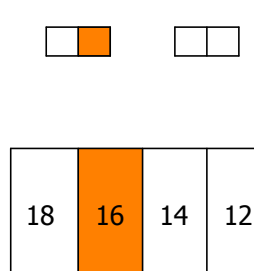
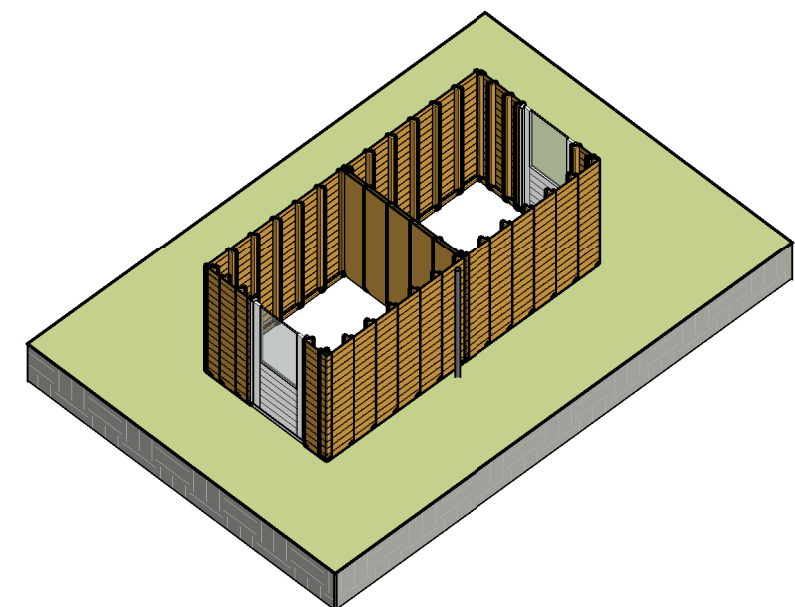
Coupurehof 16
Rechterzijaanzicht



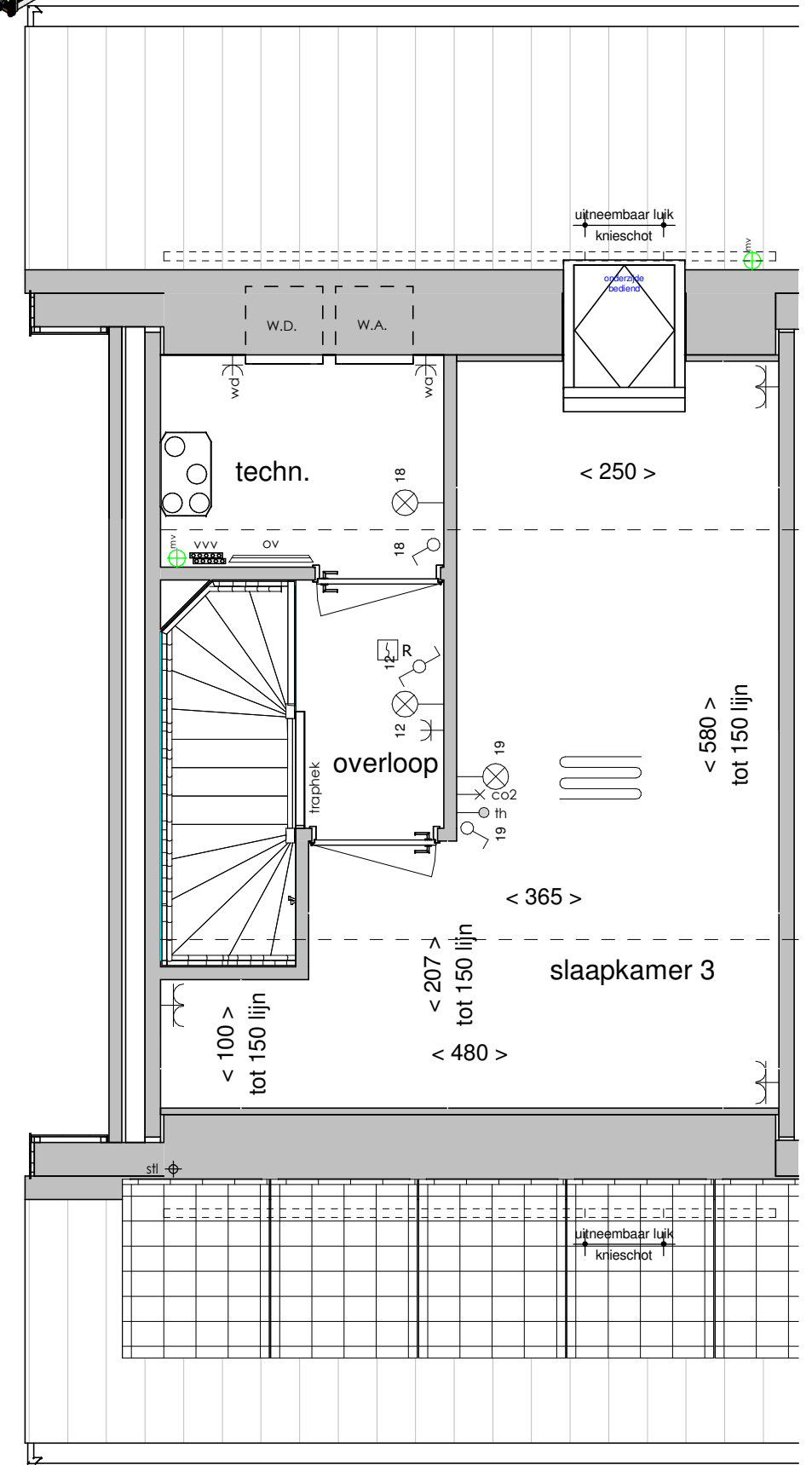
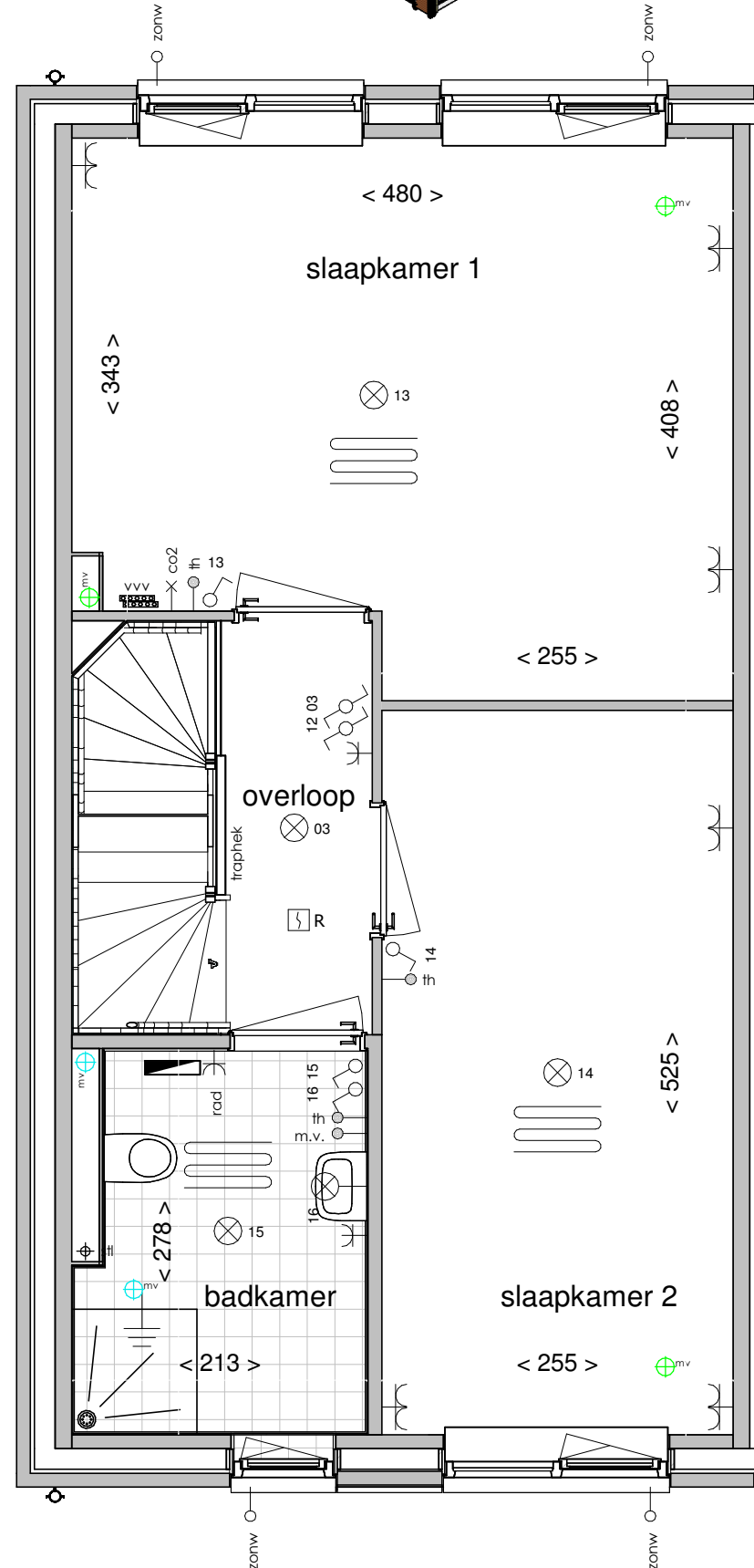
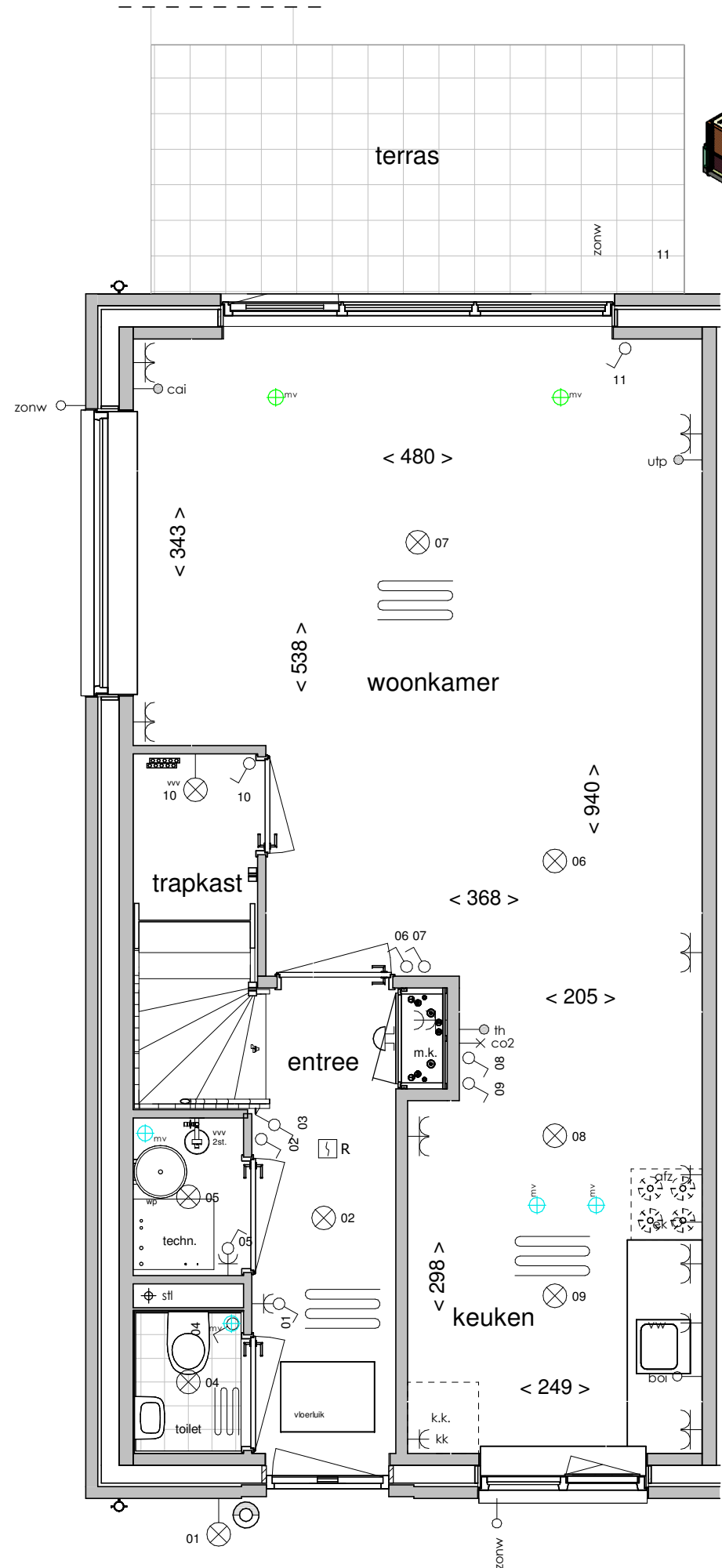
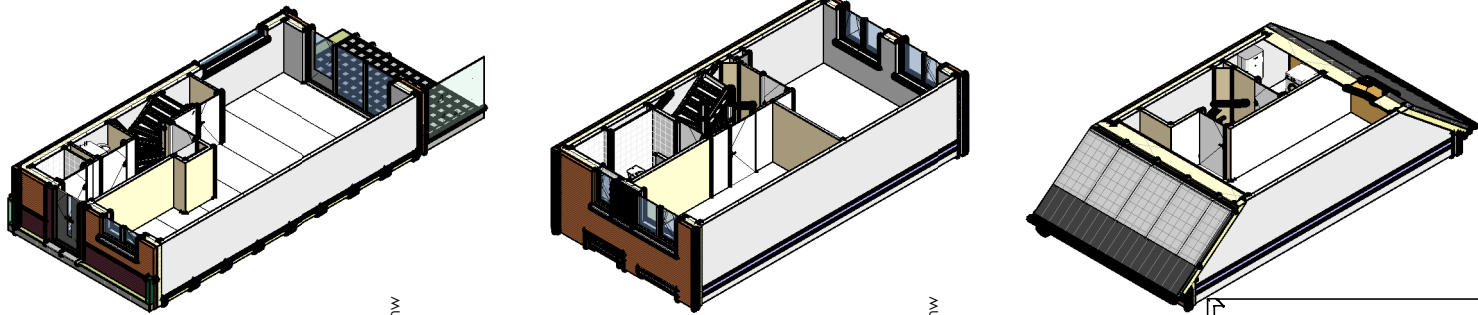
Coupurehof 16
Coupurehof 18
Achteraanzicht

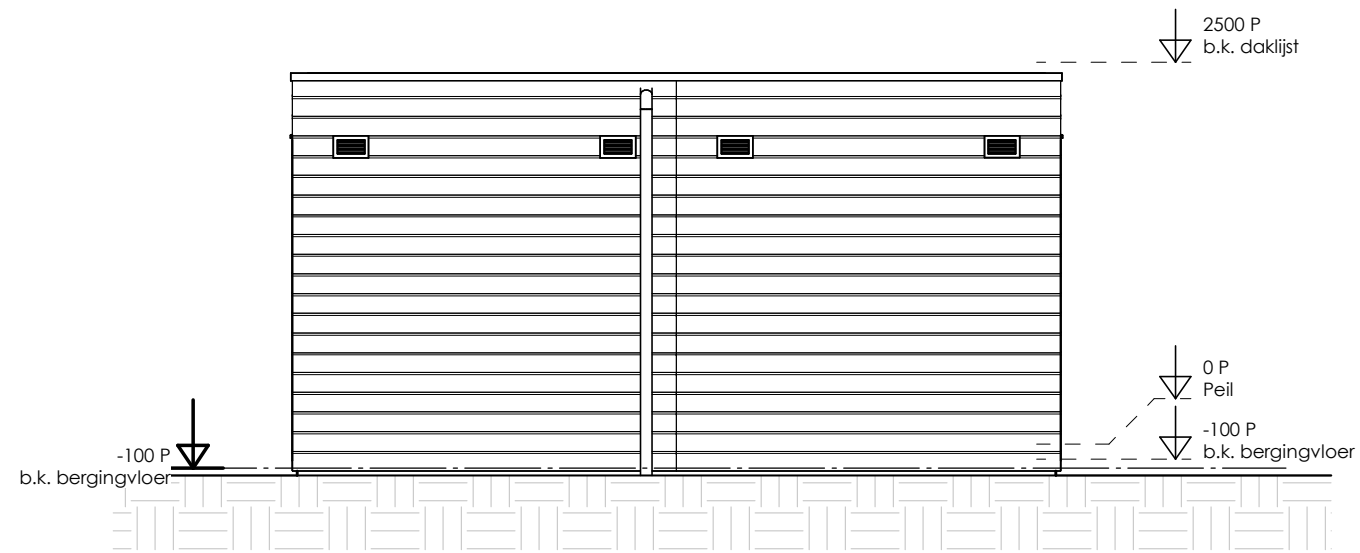


Coupurehof 18
hwa Coupurehof 16
Plattegrond

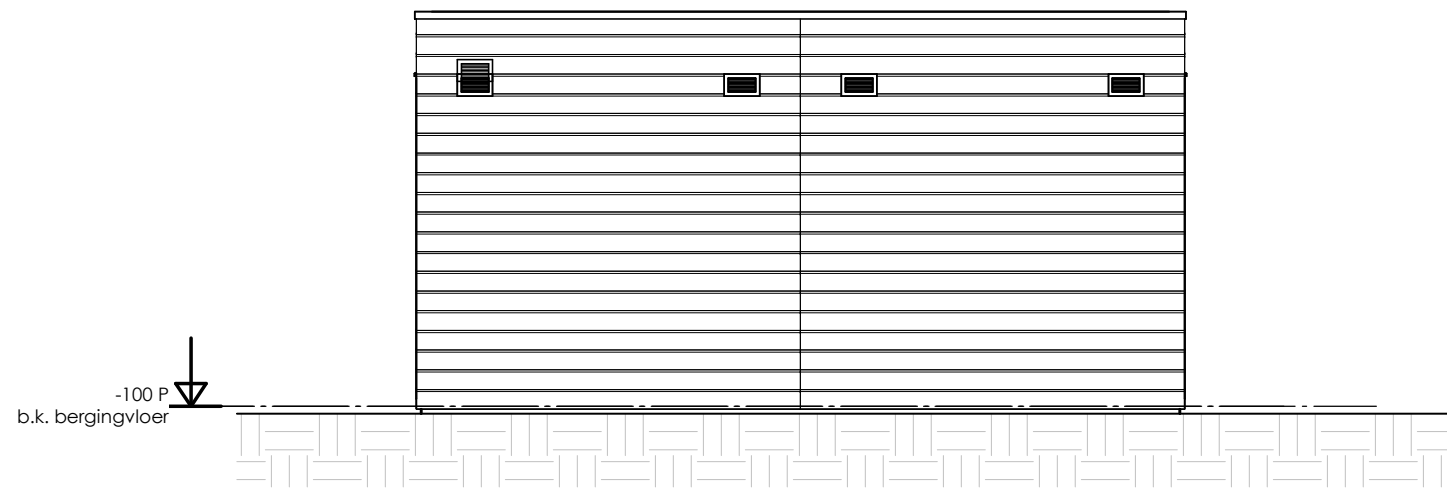


18	16
	14
	12

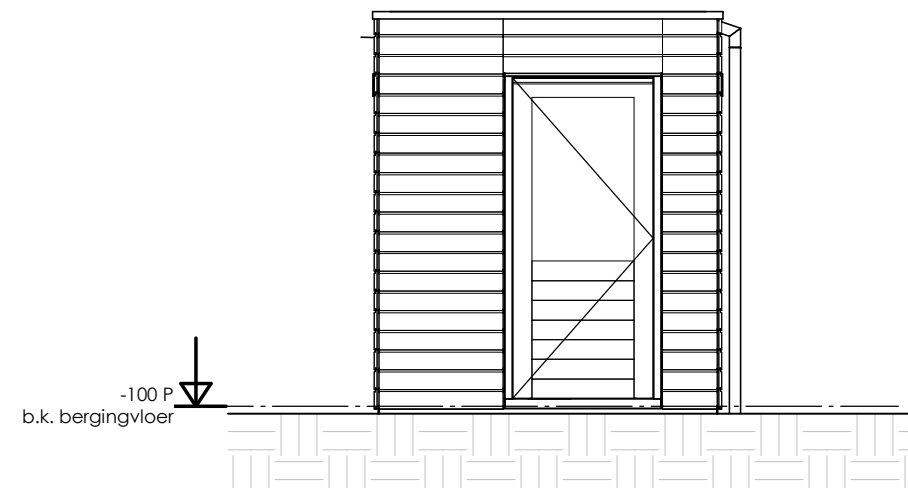




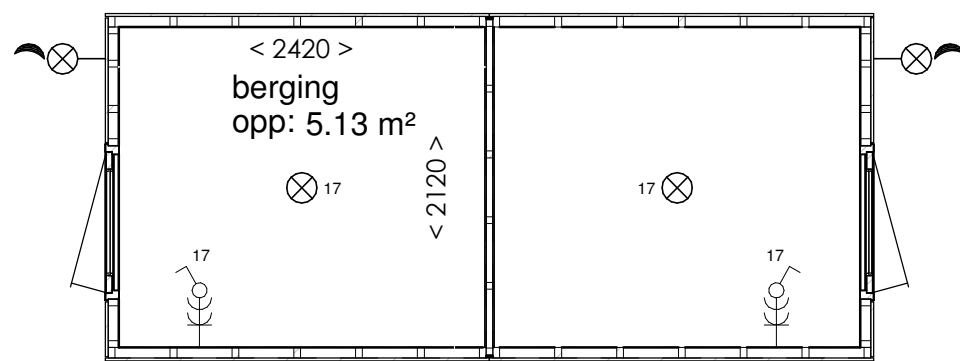
Coupurehof 18
Coupurehof 16
Vooraanzicht



Coupurehof 16
Coupurehof 18
Achteraanzicht



Coupurehof 18
Linkerzijaanzicht



Coupurehof 18
hwa Coupurehof 16
Plattegrond

